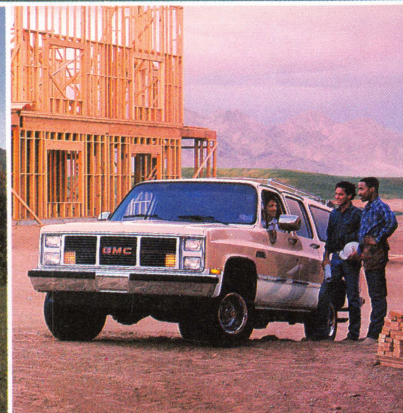
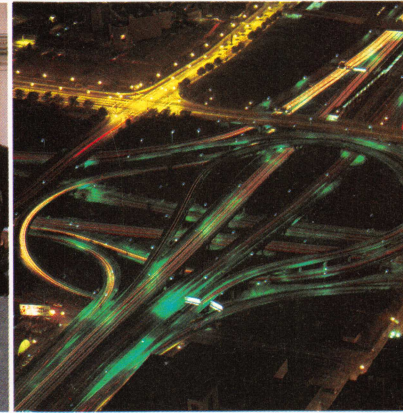




GMC TRUCK



GMC TRUCK

SIERRA

The most revolutionary Full-Size Pickup in GMC Truck history. A truck that combines hard work with plenty of passenger room, riding comfort and performance. It offers tough hauling and trailering capacity, plus personal transportation. Choose from 2-WD or 4-WD, Regular Cab or Club Coupe, Cab & Chassis or Wideside Pickup models. Or, your selection can be a sporty Regular Cab Pickup with a new Sportside cargo box that has side steps for additional cargo access.

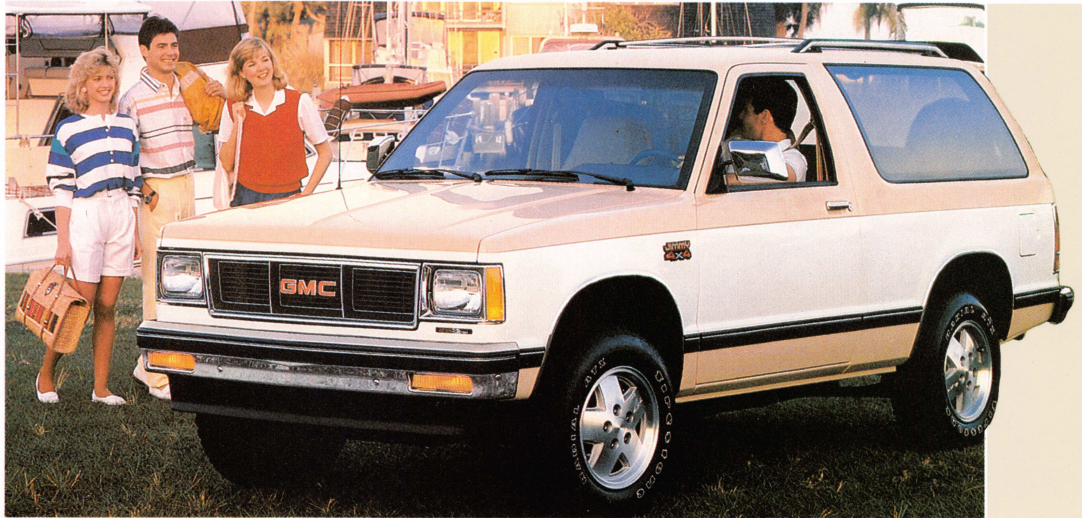


S-15 PICKUP

As a personal or a commercial Pickup, S-15 is tough to beat. Bigger than most imports to handle tough jobs, smaller than full-size for easy maneuverability. Yet it's remarkably roomy and comfortable. Regular Cab models offer standard 3-across seating. Club Coupe has even more space for people or luggage. Go with 2-WD or 4-WD, long or short cargo box. A wide choice of trim levels and options lets you outfit an S-15 to suit your tastes. You can even select Cab & Chassis models for your specialty body needs.

S-15 JIMMY

The practical, affordable, compact utility truck that does so much, and does it all so well. Whether you want sporty looks and luxury for around-town driving in 2-WD, or a combination of 2-WD and rugged 4X4 performance for off-road adventuring. All models can be equipped to carry four adults and their luggage. And there's lots of room for camping gear or other cargo. For '88 there's a new available sunroof option to add extra style and distinction.



V-JIMMY

With big V8 power and 4x4 traction, V-Jimmy lets you make tracks for the fun...in style and comfort. Inside, V-Jimmy is roomy enough to carry up to five persons — with the available rear seat. Or pack aboard a whopping big load of cargo. Under the hood, a fuel-injected, 5.7 Liter V8 is standard for gasoline models. It's also available with 6.2 Liter V8 diesel power (except in California), plus a variety of available options.

SUBURBAN

Loads of space and plenty of pull. That's GMC Truck's Suburban. Equipped with available seating, it can carry up to nine adults with passenger-car luxury. And it can handle whopping big trailer loads with ease — up to 9500 lb gross trailer weight, depending on model and equipment. Small wonder that the Suburban is such a popular trailering vehicle. Choose from big V8 gasoline or diesel power, 2-WD or 4-WD models. Also great for hauling people and cargo are the Bonus/Crew Cab Pickups with 4-door access to the interior; ask your GMC Truck Dealer about them, too.



SAFARI PASSENGER VAN

The van that's so versatile you won't need a second vehicle. Because Safari is superbly suited to traveling, commuting, van pooling, cargo hauling and trailering. It offers standard fuel-injected V6 power, generous load space and a variety of seating plans. What's more, it's easy to drive, easy to step into or load with cargo, easy to park in a garage. Three trim levels are available, including the top-level SLT, or Luxury Touring model.

RALLY

All the room you need in a full-size van, plus a large measure of style, comfort and convenience. Not to mention Rally's surprising versatility. There's standard seating for five in all models, and available arrangements for eight or 12 passengers, depending on the model. Or remove the rear seats and you have a truck-sized cargo hauler. Choose the trim level you prefer from standard Rally, or uplevel Rally Custom or STX models.



Safari

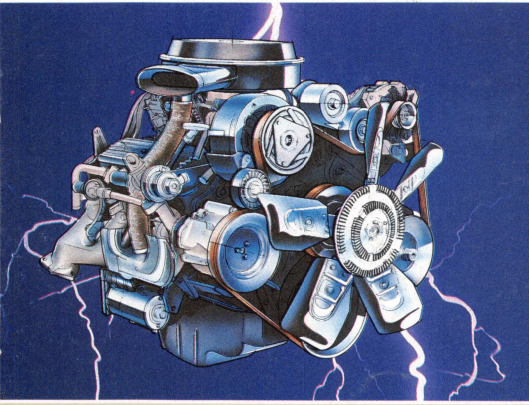


Vandura

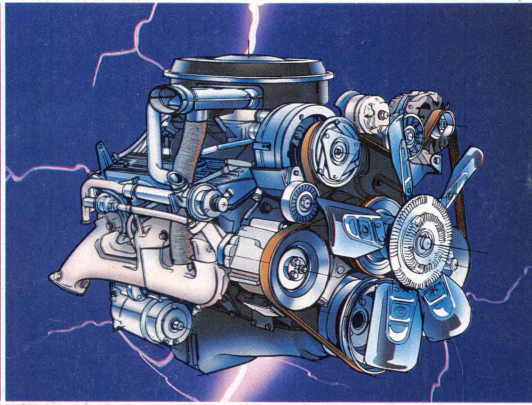
CARGO VANS

Take your pick of two proven cargo vans to fit your business needs. There's the new-size Safari with its easy maneuverability and up to 189.9 cu ft of load space. Plus the full-size Vandura with V6 and V8 gasoline or V8 diesel power, GVW ratings that can range up to 8600 lb, and trailer-towing capacity up to 10,000 lb gross trailer weight with available equipment. Both can be outfitted with racks and bins to suit the requirements of your business or trade. Also ask your GMC Truck Dealer about the high-capacity Magnavan and Value Van cargo van models.

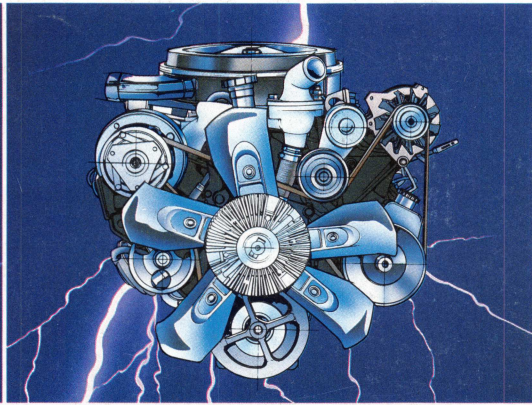
POWER TEAM DATA



4.3 Liter Vortec V6 Gasoline Engine



5.0 Liter V8 Gasoline Engine



6.2 Liter V8 Diesel Engine

ENGINES

GMC Truck's Light Duty models have rugged, dependable engines designed for hard-working performance and driving pleasure. All gasoline engines described below have Electronic Fuel Injection for easy starting and good drivability (LT9 and LE8 engines excepted).

2.5 Liter Tech IV. This smooth in-line 4-cylinder gasoline powerplant features cross-flow cylinder head design and a low weight-to-horsepower ratio.

2.8 Liter V6. An excellent power choice for S-15 models. This frisky V6 gasoline engine has a relatively high 8.9 to 1 compression ratio for impressive horsepower and torque output.

4.3 Liter Vortec V6. One of the most advanced gasoline engines in the GMC Truck lineup, this high-compression V6 features a Vortec swirl-port induction system for efficient mixing of fuel and air.

5.0 Liter V8. Fast-burn combustion chambers and aluminum, coolant-heated inlet manifolds help give this popular V8 gasoline engine high horsepower and torque ratings.

5.7 Liter V8. Fast-burn combustion chambers of this gasoline powerplant help provide impressive acceleration and power. Aluminum, coolant-heated inlet manifolds help assure good fuel delivery.

7.4 Liter V8. A large displacement gasoline workhorse with plenty of torque to

handle big jobs, the 7.4L V8 is ideal for trailer-towing, heavy-hauling and other hard work.

6.2 Liter Diesel. Designed especially for truck use, this big V8 combines heavy-work capability with diesel operating advantages. Glow-plug starting system helps provide quick starts.

A WORD ABOUT ENGINES

GMC Trucks are equipped with engines produced by GM or suppliers to GM worldwide.

TRANSMISSIONS

GMC Truck offers a wide range of transmissions to suit personal tastes and driving requirements. The lineup includes a 4-speed manual and 5-speed manual with overdrive. Plus a 3-speed automatic and a 4-speed automatic with overdrive. Availability depends on truck model and engine selection.

ENGINE AVAILABILITY BY MODEL

Type	ENGINE									
	Gasoline								Diesel	
Displacement	2.5L	2.8L	4.3L	4.8L	5.0L	5.7L	7.4L	7.4L	6.2L	
Configuration	L4	V6	V6	L6	V8	V8	V8	V8	V8	
Order Code	LN8	LL2	LB4	L25	L03	L05	LT9(1)	L19	LE8(1)	LH6 LL4(2)
MODEL AVAILABILITY										
S-15 Pickup	S	A								
S-15 Jimmy (2-WD)	S	A								
S-15 Jimmy (4-WD)		S								
S-15 Cab & Chassis		S								
Safari Cargo Van	S		A							
Safari Passenger Van			S							
Sierra Pickup (15-2500 Series)			S		A	A			S	4
Sierra Pickup (3500 Series)						S		A		S
Sierra Cab & Chassis								A		S
V-Jimmy						S				S
Suburban (1500 Series)						S				S
Suburban (2500 Series)						S		A	5	S
R&V Pickup (ex. TV30903)				S	4		A	A		S
R&V Pickup (TV30903)						S		A		S
R&V Cab & Chassis				S	4		A	6	A	7,4
Vandura (1500 Series)			S		A					
Vandura (2500 Series)			S		A	A	3			S
Vandura (3500 Series)			S		A	A		A		S
Rally (1500 Series)			S	4		A	4			
Rally (2500 Series)			S		A	A	4			S
Rally (3500 Series)						S		A		S
VS/MV/RCS						S	6	S	7	A
Value Van/FC Chassis (2500 Series)				S	4		A	4		S
Value Van/FC Chassis (3500 Series)				S			A	6		S
Motor Home Chassis									S	4

S - Standard A - Available VS - Vandura Special MV - Magnavan RCS - Rally Camper Special FC - Forward Control
 1 - Carbureted version. 3 - 125-in wheelbase only. 5 - 2-WD models only. 7 - For models over 10,001 lb GVWR.
 2 - For models over 8500 lb GVWR. 4 - Not available in California. 6 - For models under 10,001 lb GVWR. 8 - Except TP318-32032 models.



LET'S GET IT TOGETHER.



1980-88 USA
Litho in USA

The right is reserved to make changes at any time, without notice, in prices, colors, materials, equipment, specifications, and models. Check with your GMC Truck Dealer for complete information.



Commitment Plus is one of the most complete joint sales and service customer satisfaction programs available on light-duty trucks today. It offers the following benefits:

- A thorough new vehicle inspection
- One full tank of fuel
- Complimentary 3000-mile maintenance service including oil change and oil filter at no extra charge

GMC Truck and GMC Truck Dealerships are truly committed to making GMC Light Duty Trucks easy to live with. Our customers' total satisfaction is indeed our goal!

Applies to retail sales only. See your GMC Truck Dealer for vehicle eligibility.



GMC Truck Light Duty 6 year/60,000 mile Powertrain Warranty and 6 year/100,000 mile (Rust-Through) Corrosion Protection. See your GMC Truck Dealer for Terms and Conditions of this Limited Warranty.